

LEVELGUARD SERIES LEVEL GAUGES (SHIELDED TUBULAR LIQUID LEVEL GAUGE)

APPLICATION:

The Levelguard liquid level gauge replaces unprotected tubular glass that is mounted between tubular gauge glass valves. The packing nut on the tubular valve tightens around the metal nozzles of the Safeguard gauge, not glass! Nozzles match the O.D. of 5/8" glass or 3/4" glass. Gauge is suitable for low to medium pressure applications to 500 psig.

SAFETY:

Sight tube is totally enclosed on three sides by a metal frame and on the front with a Polycarbonate shield.

ONE PIECE ASSEMBLY:

One continuous gauge provides total visibility of the liquid level of a tank. Maximum length is 25 feet. No stacking of gauges is needed.

ECONOMICAL:

One Liquid Level Gauge per tank with a set of Kenco tubular valves gives the full view of the liquid level in the tank.

EASY TO INSTALL:

Insert the 5/8" or 3/4" metal nozzles into the existing valves. The stuffing box seals around the metal nozzle, not the glass.

VOLUME AND HEIGHT SHIELDS:

The Polycarbonate shield can be supplied with various scales indicating height, calibration rate, or tank volume. Refer to page 12 to see the assortment of standard shield options.

OTP SERIES LEVEL GAUGE (Outer Tube Protector Gauge)

APPLICATION:

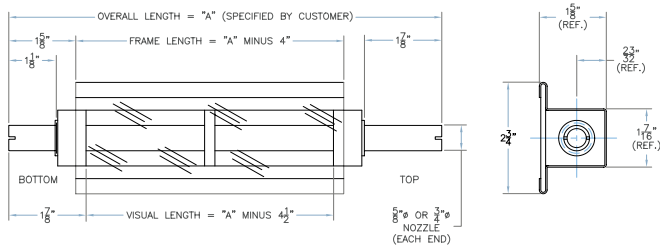
With the OTP Style Gauge the borosilicate gauge glass is protected by a 360° UV stabilized polycarbonate tube. This gauge is ideal for an outdoor environment where the gauge is exposed to the elements (i.e. hail, wind, etc.). The gauge is priced to be an economic alternative to a tubular gauge glass shrouded by expanded metal. The OTP will operate in low to medium pressure applications to 500 psig.

FEATURES:

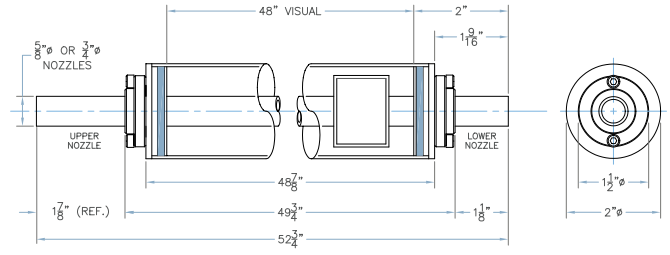
- Replaces unprotected tubular gauge glass.
- 360° visibility of fluid level.
- Red-line glass is standard for easy viewing of fluid level.
- The tubular valve packing nut tightens around 316 S.S. nozzles, not glass!
- Outer tube is high impact UV stabilized polycarbonate tubing.
- 316 S.S. nozzles available in a 5/8" O.D. or 3/4" O.D.
- Maximum overall length is 52 3/4". For longer lengths, use Safeguard Level Gauge.
- Easy to install - Insert the 5/8" O.D. or 3/4" O.D. nozzles into the valves.
- Ideal for use with most Tubular Gauge Glass Valves.



LEVELGUARD SERIES LEVEL GAUGE



OTP SERIES LEVEL GAUGE



ORDERING SYSTEM

REQUESTED BY: _____ COMPANY: _____
 ADDRESS: _____ CITY: _____ STATE: _____ ZIP: _____
 PHONE: _____ FAX: _____ EMAIL: _____

LEVELGUARD SERIES LEVEL GAUGE

— — —

Gauge Style

LG1-S-625 = 5/8" OD Tubular Conn.
 LG1-S-075 = 3/4" OD Tubular Conn.

Center to Center Dimension (inches)

Material of Construction

PC= PVC Wetted Parts w/ Carbon Steel Frame
 PS= PVC Wetted Parts w/ Stainless Steel Frame
 C=Zinc Plated Carbon Steel
 A =Stainless Steel
 W=316 Stainless Steel Wetted Parts w/ Carbon Steel Frame

Seal Material

V=Fluorocarbon
 A=Aflas
 B=Buna-N
 T=PTFE
 E=Ethylene Propylene

— — —

Shield Options

L=Clear Polycarbonate
 H=Height Scale
 RH=Rate Height Scale
 MH=Metric Height Scale
 MRH=Metric Rate Height Scale
 M=Expanded Metal Guard

Sight Tube Options**

GS=5/8" O.D. Glass (STANDARD)
 RL=5/8" O.D. Redline Glass

Maximum Working Pressure (PSIG)

Maximum Operating Temperature (°F)

— — —

Steam

S=Steam Application
 NS=Non-Steam Application

Valve Manufacturer

P - PAPAILIAS
 Other (Please Specify)

Valve Manufacturers Part

TUL/TUH
 Other (Please Specify)

OTP SERIES LEVEL GAUGE

— — — **RL** —

Gauge Style

OTP-5/8=5/8" O.D. Tubular Connection
 OTP-3/4=3/4" O.D. Tubular Connection

Center to Center Dimension (inches)

Seal Material

V=Fluorocarbon
 A=Aflas
 B=Buna-N
 T=PTFE
 E=Ethylene Propylene

Sight Tube Options

RL=5/8" O.D. Redline Glass

Maximum Working Pressure (PSIG)

— — — — **by PAPAILIAS COMPANY**

Maximum Operating Temperature (°F)

Steam

S=Steam Application
 NS=Non-Steam Application

Valve Manufacturer

PAPAILIAS
 Other (Please Specify)

Valve Manufacturers Part

TUL/TUH
 Other (Please Specify)

Overall Length (Inches)

** Based on application data provided, PAPAILIAS will select the appropriate sight tube material, i.e. high pressure glass.